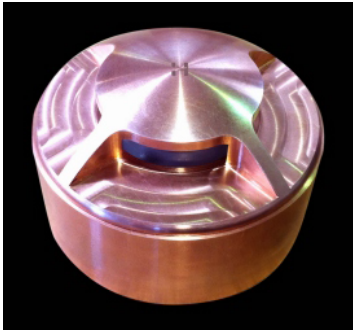
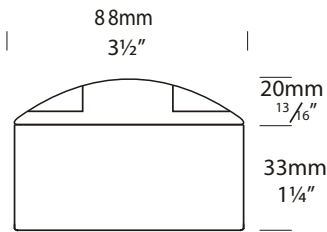


Path Lite Surface Mount

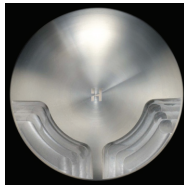
Cat. No. PLSM



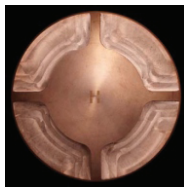
Path Lite Surface Mount 3 facet



RNSM 2-90 ° Beam RNSM1 -180° Beam



3/SM 2 /4x90° Beam RNSM 4-360° Beam



The Path Lite Surface Mount is ideal for lighting flat areas where a recessed fitting is not suitable. It is especially suited to decks, paved courtyards, and edge lighting paths. The luminaire comes with a G4 Halogen capsule which is mounted higher allowing for greater projection of horizontal light. This capsule coupled with a frosted Borosilica dome glass lens produces little-to-no glare through 1, 2, 3 or 4 facets. The frosted Borosilica dome glass lens has been developed to prevent dirt, mud, grass clippings or water from entering the optics area, keeping with its IP68 rating. In addition, the glass lens retains the sealing gasket.

Ordering Information:

Luminaire Type

PLSM - Path Lite Surface Mount

Material

COP - Copper
SS - 316 Stainless Steel

Accessories

CJK150 - Cable Joint Kit

Flange

- 1-90 - Single Facet
1-90° Beam Spread
- 1 - Two Facet
180° Beam Spread
- 2 - Two Facet
2-90° Beam Spread
- 3 - Three Facet
270° Beam Spread
- 4 - Four Facet
360° Beam Spread

Ordering Example PLSM4 COP - Path Lite Surface Mount 4 facet in Copper

PLSM4CJK150 COP - Path Lite Surface Mount 4 facet with Cable Joint Kit

(Accessories ordered separately)

HUNZA™ PURE OUTDOOR LIGHTING

HUNZA FACTORY
130 Felton Mathew Ave
Glen Innes
Auckland 1072
New Zealand

Ph: 64-9-528 9471
Fax: 64-9-528 9361
hunza@hunza.co.nz
www.hunzalighting.com

INTERNATIONAL CONTACTS:
<http://www.hunzalighting.com/contact.php>

Specifications may change without notice.
Manufactured in New Zealand.
© 2016 Hunza Holdings Ltd. Ver 1.4

Luminaire Construction

CNC machined from one of the following metals:

Copper Body: 88mm (3½") x 9mm (13/32").

Flange 88mm (3½") solid copper rod.

316 S tainless Steel Body: 88mm (3½") x 9mm (13/32").

Flange 88mm (3½") solid 316 stainless steel rod.

Mounting

The luminaire is secured to the ground by three mounting screws.

Features

Lens:

3mm (1/8") thick frosted Borosilica dome glass lens .

Lifetime Warranty .

Gaskets:

Silicone, iron impregnated 220°c (428°f).

Lamp Holders:

G4 - 350°c (662°f) ceramic multi contact lamp holder with 250°c (480°f) teñon cables.

G9 - 280°c (536°f) ceramic lamp holder with 250°c (480°f) teñon cables.

Accessories:

Cable Joint Kit (Cat. CJK150).

Not approved for USA /Canada.

Standards

EN60598

IP68



UL1838

Luminaire Weight

Cop 1.30kg (2lb 12oz)

SS 1.00kg (2lb 2oz)

Power Supply

HUNZA™ Inground or W all Mount Transformer: not included.

USA and Canada:

HUNZA™ Wall Mount Transformer: not included.

Luminaire: supplied with

Halogen

G4 20 watt lamp max.

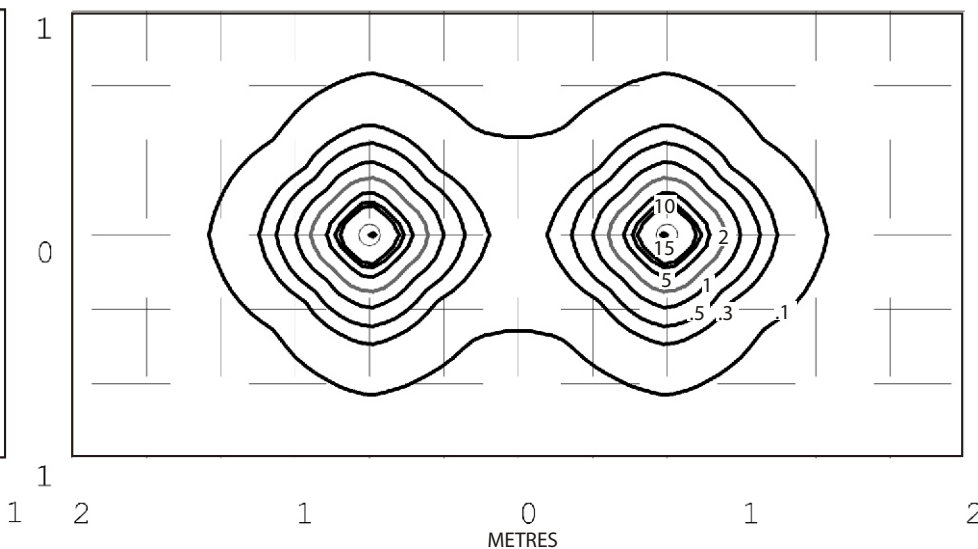
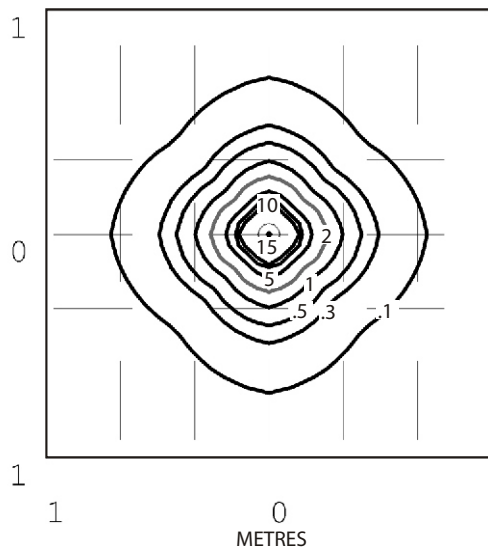
LED - Refer to previous page.

USA and Canada:

G4 20 watt lamp max.

LED - Refer to previous page.

Path Lite 4 facet G4 20 watt lamp - Lens height 5mm (¼")



Isolux Lumens Plot - Footcandles = Isolux figures divided by 10.76

HUNZA™ PURE
OUTDOOR
LIGHTING

HUNZA FACTORY
130 Felton Mathew Ave
Glen Innes
Auckland 1072
New Zealand

Ph: 64-9-528 9471
Fax: 64-9-528 9361
hunza@hunza.co.nz
www.hunzalighting.com

INTERNATIONAL CONTACTS:
[http://www.hunzalighting.com/
contact.php](http://www.hunzalighting.com/contact.php)

Specifications may change without notice.
Manufactured in New Zealand.
© 2016 Hunza Holdings Ltd. Ver 1.4